



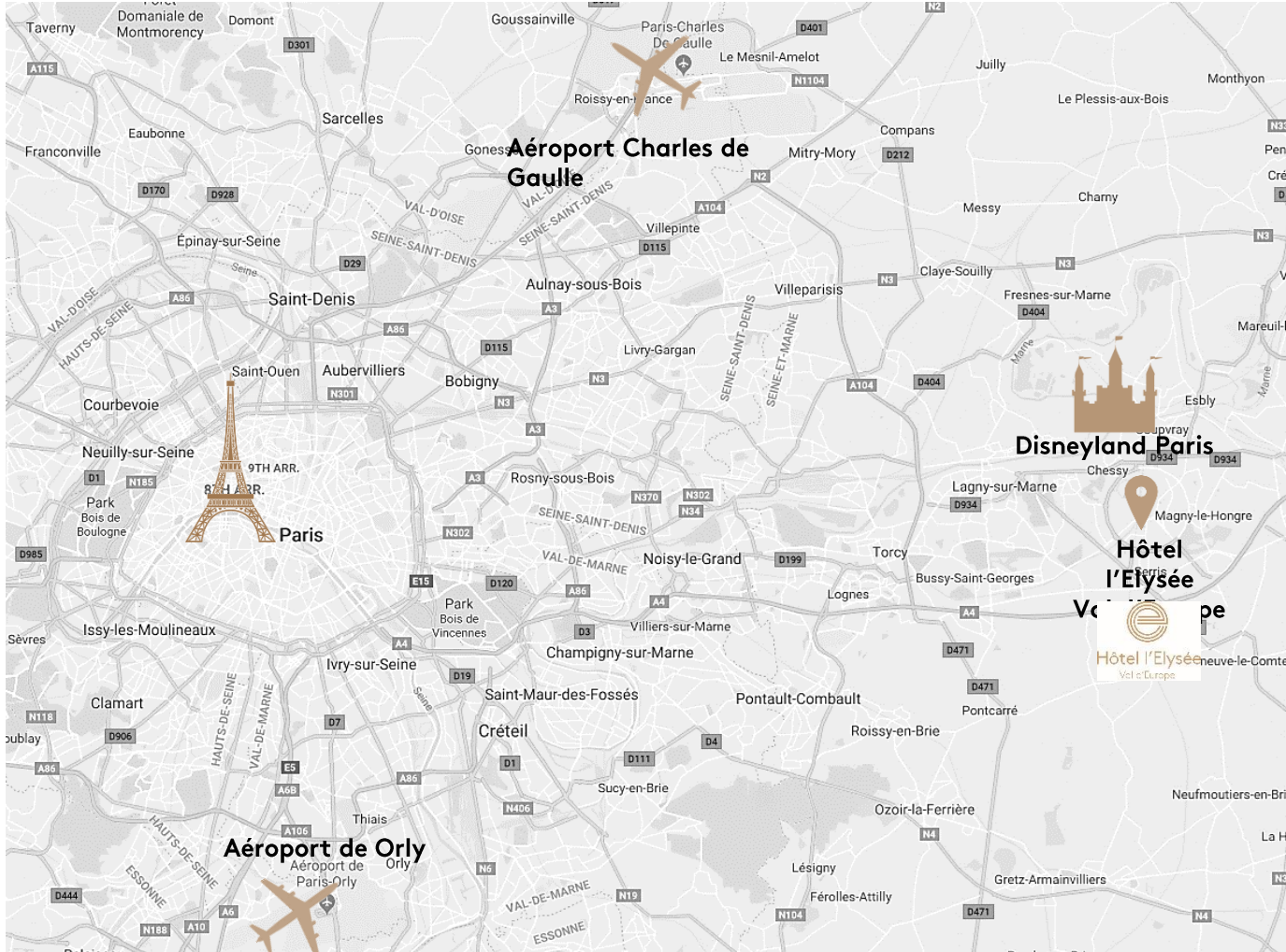
# Hôtel l'Elysée

Val d'Europe



# HOTEL L'ELYSÉE VAL D'EUROPE \*\*\*\*

Ideally located between **Paris** et **Disneyland**  
**Paris**



**RER A :**  
Station Val d'Europe : *2 minutes*



**Car :**  
Highway A4 : *5 minutes*



**Train Station:**  
Gare de Lyon : *35 minutes*  
Gare de Chesy Marne la Vallée : *15*



*minutes*  
**Airport :**  
Roissy Charles de Gaulle : *30 minutes*  
Orly : *30 minutes*

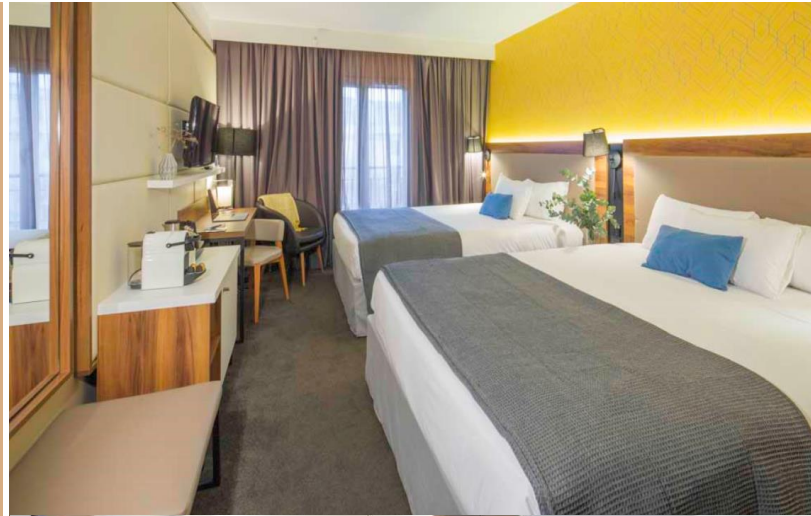
**NAVETTE PRIVÉE**  
PRIVATE SHUTTLE | LANDADESA PRIVATA  
L'ELYSEE | ADAGIO | HIPARK

**Free Shuttle :**  
Between the hotel, Disneyland Parks  
& the train station Chesy Marne la Vallée (same stop).

# HOTEL L'ELYSÉE VAL D'EUROPE \*\*\*\*







A 4 Star experience in a **design & elegant** environment

- An optimal comfort in a modern setting
- 152 renovated rooms
- Standard & Premium categories
- A Steakhouse restaurant « Le George »
- A Lounge Bar « Le Diplomate »
- 4 modular meetings rooms
- 110 private parking places



# HOTEL L'ÉLYSÉE VAL D'EUROPE \*\*\*\*

## Fully equipped & modular meeting rooms

ROOMS CAPACITIES							
SALONS	Surface M <sup>2</sup>	Theater 	Classroom 	U 	Cabaret 	Banquet 	Cocktail 
ELYSEE : 1 + 2 + 3	186	200	140	60	84	130	180
1 – CARNOT	72	70	50	30	36	48	72
2 – MARCEAU	72	70	50	30	36	48	72
3 – HOCHE	42	40	30	18	18	24	30
1 + 2	144	160	100	48	66	96	145
2 + 3	115	120	80	36	48	70	105
VENDÔME	22,87	-	-	12	-	-	-
MEETING SUITES #128 #228 #328 #428	36	16	10	10	6	8	-

# HOTEL L'ÉLYSÉE VAL D'EUROPE \*\*\*\*

## Packages for all types of seminars



### Daily Delegation Rate

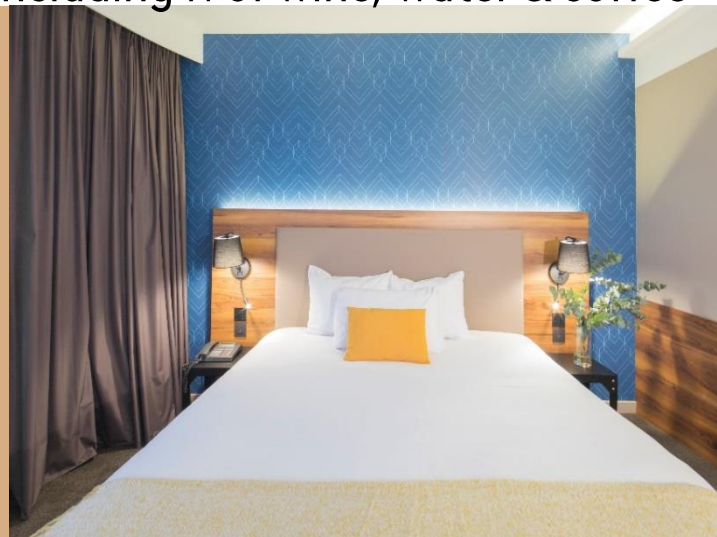
From 77€ TTC including:

- Fully equipped plenary meeting room
- 2 coffee breaks
- 3 courses lunch or buffet (from 30 pax to 120 pax) including ¼ of wine, water & coffee

### Residential Rate

From 227€ TTC including:

- Fully equipped plenary meeting room
- 2 coffee breaks
- 3 courses lunch and diner or buffet (from 30 pax to 120 pax) including ¼ of wine, water & coffee
- Room with breakfast included



### INCLUDED DEVICE:

- Free wifi 100Mo
- Screen & Video-projector
- ClickShare
- Paper A4 & pen
- Water

### DEVICE ON DEMAND:

- Microphone & Sound System
- Videoconferencing Platform
- Lectern
- Technical assistance

# HOTEL L'ÉLYSÉE VAL D'EUROPE \*\*\*\*

Comfortable & modern rooms  
for your employees



## CLASSIC ROOM

- Queen Size Bed
- Duvet
- Anti-allergic pillow
- Bed 160X200
- Air Conditionning
- Flat screen TV
- Complimentary tray
- Wake-up call
- Refrigerator
- Safe for your computer
- Magnifying mirror
- USB port
- Free high-speed network

## THE + PREMIUM

- Machine Nespresso with it's assortment of coffees
- Bottles of still or sparkling water
- Refrigerator
- Bathrobes & slippers
- Free news paper



## A welcoming restaurant & an innovative French menu

- 130 seats and an access to the terrace
- A selection of French and seasonal products
- Daily Chef's suggestion
- Menu served on the table
- Buffets from 30 pax to 120 pax
- Appetizer, lunch or diner cocktails

Restaurant & Privatisable Glass terrace on request



## A lounge bar warm & friendly

- A relaxed space for your breaks, appetizers or cocktails
- A selection of cocktails, champagnes, wine and crafted beers
- Cheese and cold cuts platters and snacks « à la carte »



Bar & Privatisable terrace on request



An Hotel in the middle of a dynamic & attractive zone





Live the  
Team Building  
Experience



COHESION  
EXCHANGE  
TRUST  
EVOLVE TOGETHER  
EFFICACY Value Perseverance  
PROGRESS **TEAM SPIRIT**  
**TEAM** RESPECT  
Challenge Motivation  
**BUILDING**  
Murder Party Culinary Workshops Leadership  
**GOAL** PARTICIPATORY  
ADVANCE COMMUNICATION



**Laura Casto**

MICE Sales Manager (internal)

Tel : + 33 (0)1 64 63 33 03

Mail:

[laura.casto@hotelelysee.com](mailto:laura.casto@hotelelysee.com)

**Maxence Capon**

MICE Sales Executive

Tel : + 33 (0)1 64 63 33 89

Mail: [seminaire@hotelelysee.com](mailto:seminaire@hotelelysee.com)

**Elisabeth Bramerdorfer**

MICE Sales Manager (external)

Tel: + 33 (0)1 45 92 47 31

Mobile: +33 (0) 6 75 08 61 42

Mail:

[Elisabeth.Bramerdorfer@gafihotel.com](mailto:Elisabeth.Bramerdorfer@gafihotel.com)